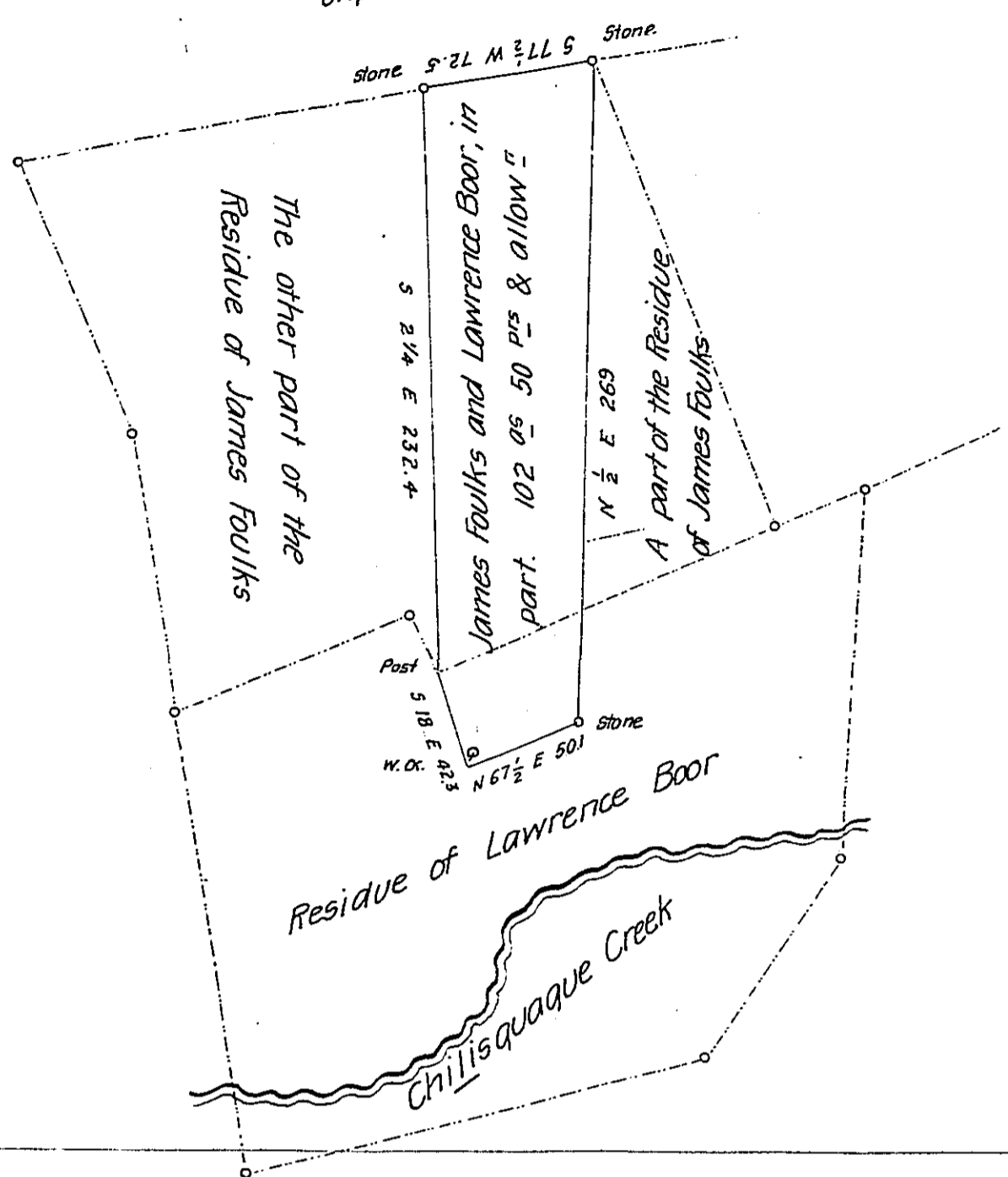


Oliphant & Steedman



Situate in Chillisquaque township in the County of Northumberland containing one hundred and two acres and fifty perches and the usual allowance of six per cent for Roads &c. (Being part of two larger tracts of land, One of which was Surveyed by Virtue of Application N^o 1368 granted to James Foulks, dated the — day of — 1769 containing 307 acres & allowance, And the other surveyed by Virtue of Application N^o 292 granted to Lawrence Boor dated the — day of — 1769 containing 300 1/2 acres & allowance.) Surveyed for Harry Mc Gee Jun^r the 27th day of March 1840

David Rockefeller D.S.

To Jacob Sallade Esqr
Surveyor General.

IN TESTIMONY that the above is a copy of the original remaining on file in the Department of Internal Affairs of Pennsylvania, made conformably to an Act of Assembly approved the 16th day of February, 1833, I have hereunto set my Hand and caused the Seal of said Department to be affixed at Harrisburg, this eighth day of March 1906

George A. Brown
Secretary of Internal Affairs.